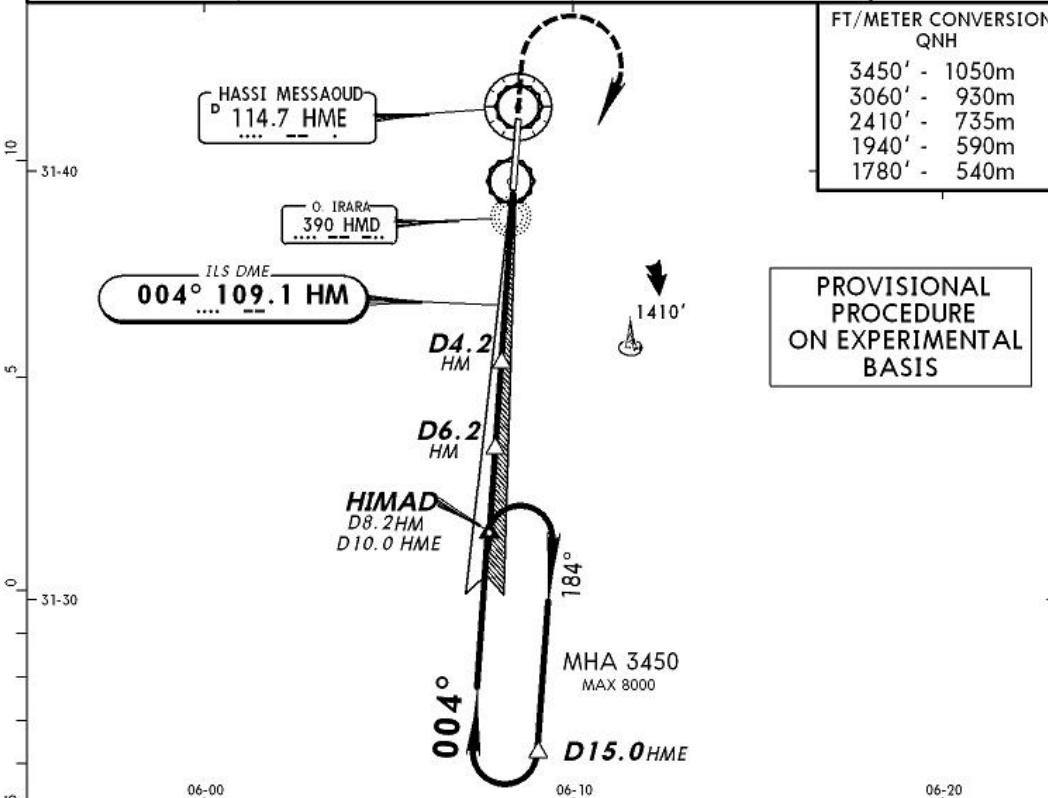


DAUH/HME
OUED IRARA-KRIM BELKACEM

JEPPESEN HASSI MESSAOUD, ALGERIA
23 MAY 08
Eff 5 Jun VOR DME ILS Rwy 36

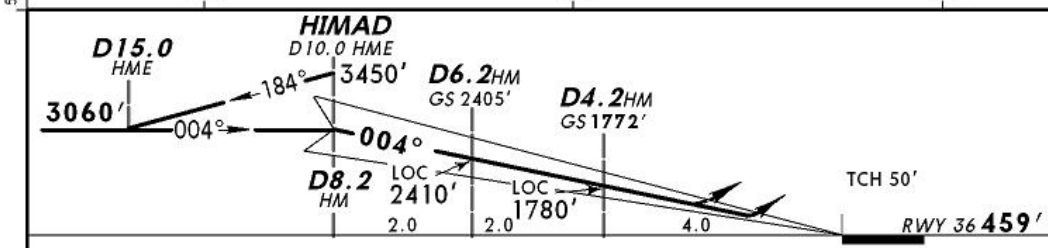
HASSI MESSAOUD Approach 120.0				HASSI MESSAOUD Tower 118.1	
LOC HM 109.1	Final Apch Crs 004°	GS D4.2 HM 1772' (1313')	ILS DA(H) Refer to Minimums	Apt Elev 459'	3500'
MISSED APCH: Climb STRAIGHT AHEAD to 1940', then turn RIGHT and climbing to MSA, and as directed.				RWY 459'	
Alt Set: MB		Rwy Elev: 17 MB	Trans level: By ATC	Trans alt: 3450'	MSA HME VOR



FT/METER CONVERSION
QNH

3450'	1050m
3060'	930m
2410'	735m
1940'	590m
1780'	540m

PROVISIONAL
PROCEDURE
ON EXPERIMENTAL
BASIS



Gnd speed-Kts	70	90	100	120	140	160	1940'	MSA
ILS GS 3.00° or LOC Descent Gradient 5.2%	377	484	538	646	753	861	↑	RT

STRAIGHT-IN LANDING RWY 36				CIRCLE-TO-LAND Not authorized West of airport	
ILS DA(H) A: 669' (210') C: 689' (230') B: 679' (220') D: 699' (240')		LOC (GS out) MDA(H) 790' (331')		Max Kts	
A				100	1060' (601') 2400m
B			2400m	135	
C	1200m			180	1160' (701') 3600m
D			2800m	205	

CHANGES: Rwy designation. Procedure. Minimums. © JEPPESEN, 2004, 2008. ALL RIGHTS RESERVED.