

DAUH/HME  
OUED IRARA-KRIM BELKACEM

JEPPESEN

HASSI MESSAOUD, ALGERIA

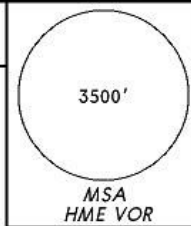
23 MAY 08 10-3

Eff 5 Jun

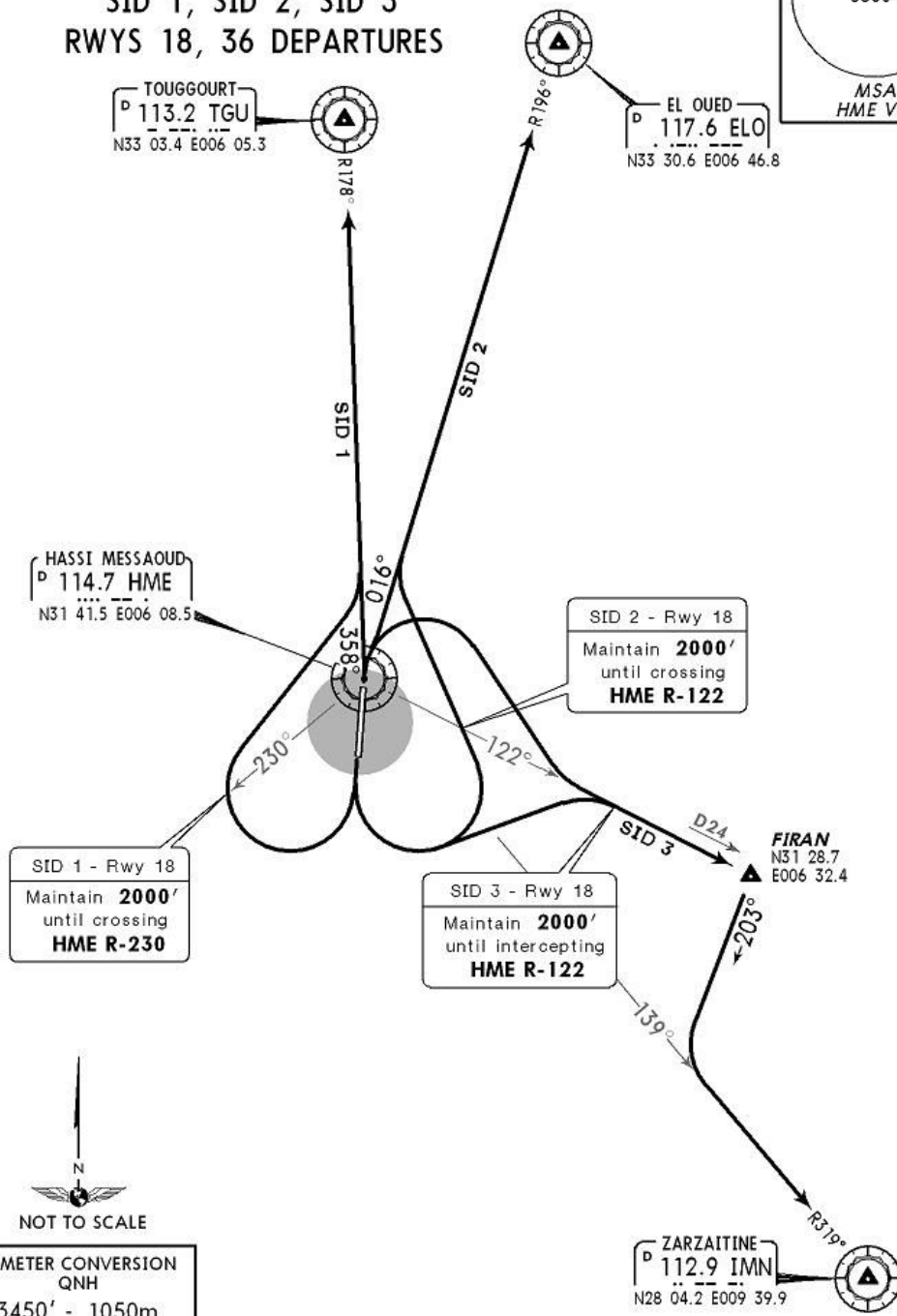
SID

Apt Elev  
459'

Trans level: By ATC Trans alt: 3450'



SID 1, SID 2, SID 3  
RWYS 18, 36 DEPARTURES



FT/METER CONVERSION  
QNH  
3450' - 1050m

SID	RWY	ROUTING
SID 1	18	Turn RIGHT (maintain 2000' until HME R-230), intercept HME R-358 to TGU.
	36	Intercept HME R-358 to TGU.
SID 2	18	Turn LEFT (maintain 2000' until HME R-122), intercept HME R-016 to ELO.
	36	Intercept HME R-016 to ELO.
SID 3	18	Turn LEFT, intercept HME R-122 (maintain 2000' until HME R-122) to FIRAN, 203° track, intercept HME R-139 to IMN.
	36	Turn RIGHT, intercept HME R-122 to FIRAN, 203° track, intercept HME R-139 to IMN.

CHANGES: SIDs revised; runway designation.

© JEPPESEN, 2004, 2008. ALL RIGHTS RESERVED.

IVAO Algeria - <http://dz.iviao.aero>