

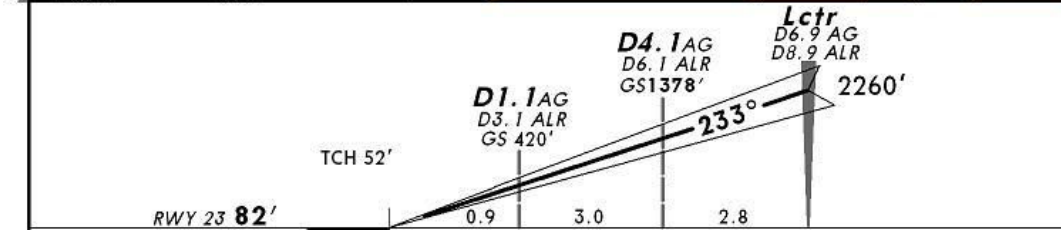
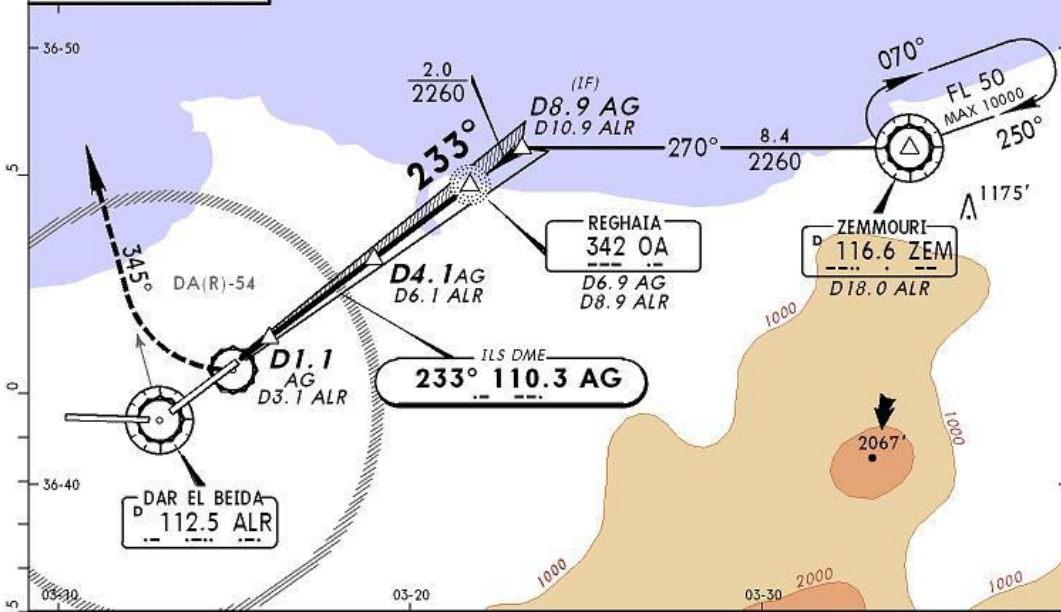
DAAG/ALG
HOUARI BOUMEDIENE

JEPPESEN
22 AUG 08 (11-3A)

ALGIERS, ALGERIA
CAT II VOR DME ILS Rwy 23

ALGIERS Approach (R)		ALGIERS Tower		Ground
121.4		118.7		121.8
LOC AG 110.3	Final Apch Crs 233°	GS D4.1 AG 1378' (1296')	CAT II ILS RA 103' DA(H) 182' (100')	Apt Elev 82' RWY 82'
MISSED APCH: Climb STRAIGHT AHEAD to 480', then turn RIGHT onto R-345 ALR, maintain 2470' and as directed.				
Alt Set: MB		Rwy Elev: 3 MB	Trans level: By ATC	Trans alt: 3940'
Special Aircrew & Aircraft Certification Required.				MSA ZEM VOR

FT/METER CONVERSION QNH	
3940'	1200m
2470'	750m
2260'	688m
480'	145m



Gnd speed-Kts	70	90	100	120	140	160	HIALS-II PAPI PAPI	480' ↑	2470' RT	ALR onto 112.5 R-345
GS	3.00°	377	484	538	646	753				

STRAIGHT-IN LANDING RWY 23
CAT II ILS
ABCD
RA 103'
DA(H) 182' (100')

RVR 350m

PANS OPS 3

CHANGES: Restriction withdrawn.

© JEPPESEN, 2005, 2008. ALL RIGHTS RESERVED.